



**Boxalls Grove, Aldershot**

  
**MARTIN&CO**

# Boxalls Grove, Aldershot

- 5 Spacious Bedrooms
- 2 Large Reception Rooms
- Ample Off-Road Parking
- Peaceful, sought-after location
- Large kitchen & downstairs WC

*This 1959 mid-century gem in Aldershot offers five spacious bedrooms and over 1,200 sq. ft. of versatile living space, perfect for families who love to host. Nestled in a peaceful, private grove with ample off-road parking, it's the ultimate "forever home" canvas waiting for your personal touch.*



Discover Your Forever Family Home in Boxalls Grove

Tucked away in a tranquil corner of Aldershot, this impressive five-bedroom detached residence offers the perfect balance of mid-century character and modern family functionality. Built in 1959, this home boasts a generous 1,249 sq. ft. layout designed for those who love to host and grow.

Inside the Home:

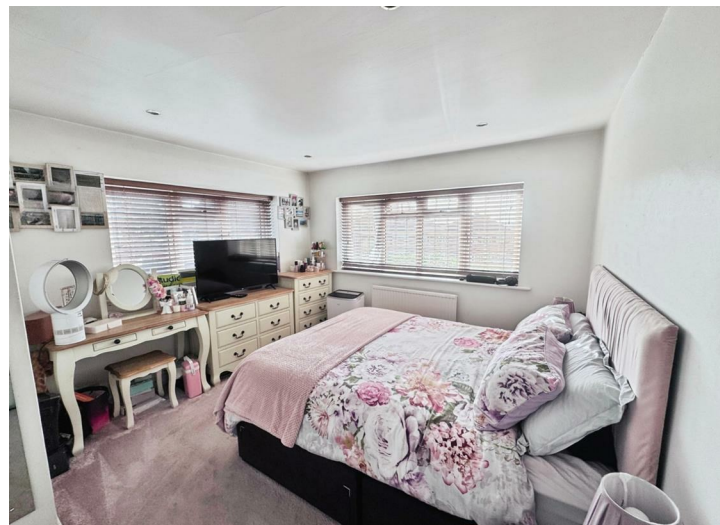


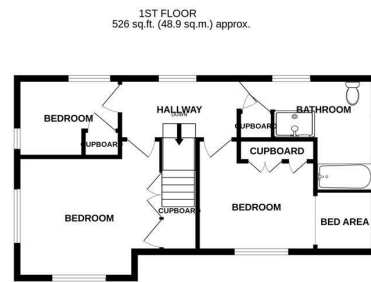
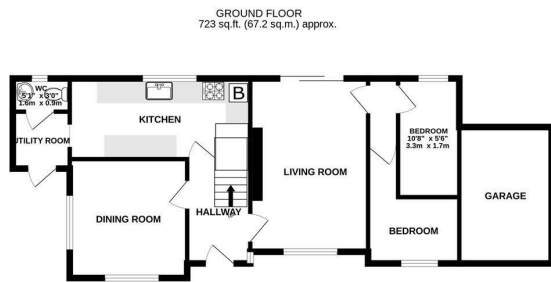
**Space to Gather:** Two expansive reception rooms offer versatile living—perfect for a cozy family lounge and a formal dining area or playroom.

**Room for Everyone:** Five well-proportioned bedrooms ensure no one has to compromise on space.

**The Heart of the Home:** A large, bright kitchen serves as a blank canvas for your culinary ambitions, supported by a family bathroom and a convenient downstairs WC.

**The Great Outdoors:** Forget the stress of street parking; this property features ample off-road parking. Located in a peaceful retreat away from the hustle and bustle, yet close enough to local amenities, it's a rare find in today's market.





TOTAL FLOOR AREA: 1249 sq.ft. (116.0 sq.m.) approx.  
 Whilst every attempt has been made to ensure the accuracy of the floorplan contained here, measurements of doors, windows, rooms and any other items are approximate and no responsibility is taken for any error, omission or mis-statement. This plan is for illustrative purposes only and should be used as such by any prospective purchaser. The services, systems and appliances shown have not been tested and no guarantee as to their operability or efficiency can be given.  
 Made with Metropix ©2026

Energy Efficiency Rating		Current	Potential
Very energy efficient - lower running costs			
(92 plus) A			
(81-91) B			
(69-80) C			
(55-68) D			
(39-54) E		52	64
(21-38) F			
(1-20) G			
Not energy efficient - higher running costs			
England & Wales		EU Directive 2002/91/EC	

Environmental Impact (CO <sub>2</sub> ) Rating		Current	Potential
Very environmentally friendly - lower CO <sub>2</sub> emissions			
(92 plus) A			
(81-91) B			
(69-80) C			
(55-68) D			
(39-54) E			
(21-38) F			
(1-20) G			
Not environmentally friendly - higher CO <sub>2</sub> emissions			
England & Wales		EU Directive 2002/91/EC	



**Martin & Co Aldershot**  
 173 Victoria Road, Aldershot, Hampshire,  
 GU11 1JU  
 Aldershot@martinco.com

**01252 311974**  
<http://www.martinco.com>



**Accuracy:** References to the Tenure of a Property are based on information supplied by the Seller. The Agent has not had sight of the title documents. A Buyer is advised to obtain verification from their Solicitor. Items shown in photographs including but not limited to carpets, fixtures and fittings are not included unless specifically mentioned within the sales particulars. They may however be available by separate negotiation. Buyers must check the availability of any property and make an appointment to view before embarking on any journey to see a property. No person in the employment of the agent has any authority to make any representation about the property, and accordingly any information given is entirely without responsibility on the part of the agents, sellers(s) or lessors(s). Any property particulars are not an offer or contract, nor form part of one. **Sonic / laser Tape:** Measurements taken using a sonic / laser tape measure may be subject to a small margin of error. **All Measurements:** All Measurements are Approximate. **Services Not tested:** The Agent has not tested any apparatus, equipment, Fixtures and Fittings or services and so cannot verify that they are in working order or fit for the purpose. A Buyer is advised to obtain verification from their Solicitor or Surveyor.

